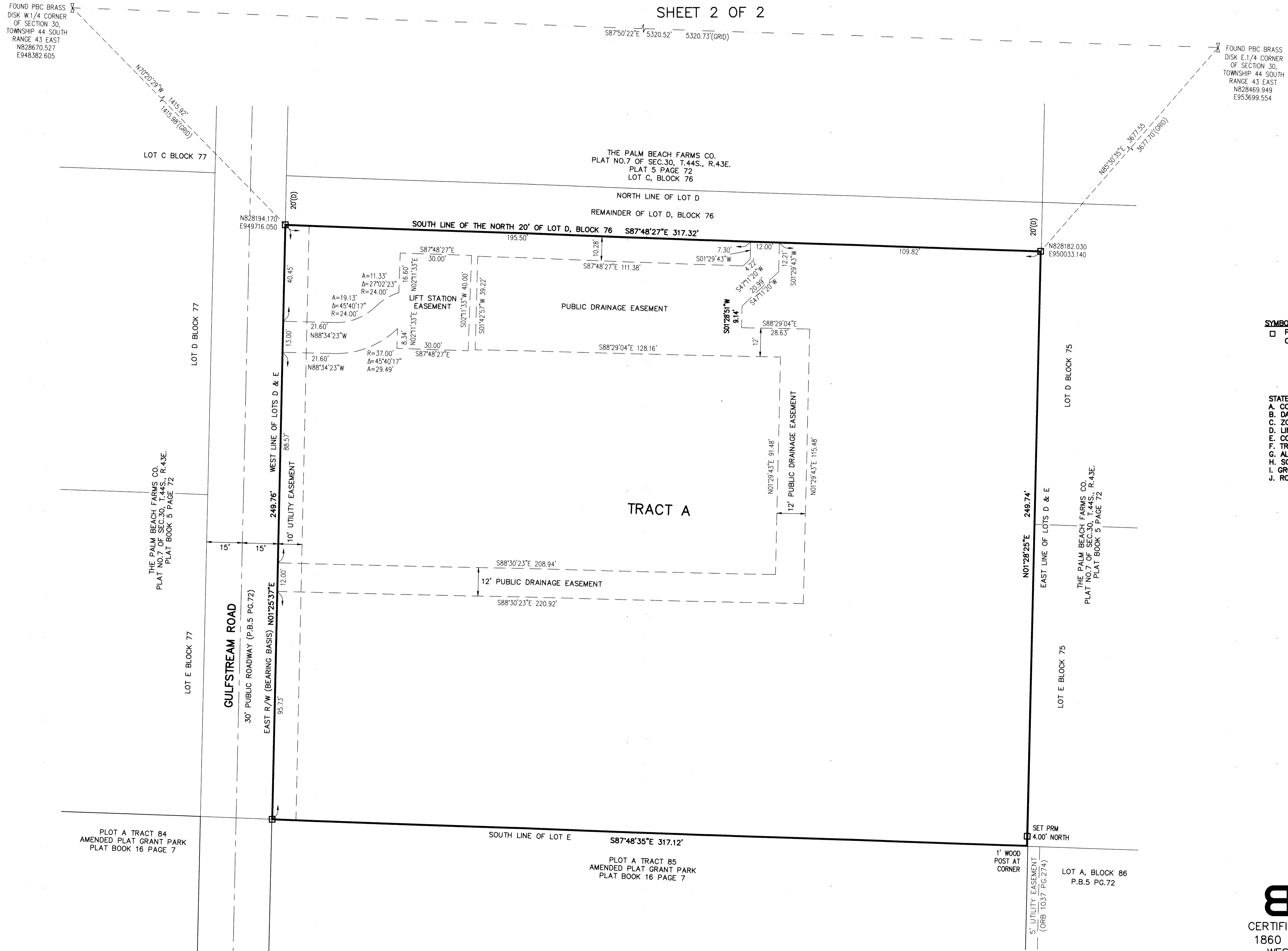


COVENANT VILLAS

A REPLAT OF A PORTION OF LOT D AND ALL OF LOT E, BLOCK 76,
THE PALM BEACH FARMS CO. PLAT NO.7, RECORDED IN PLAT BOOK 5 PAGE 72,
PUBLIC RECORDS OF PALM BEACH COUNTY, FLORIDA,
LYING IN THE SOUTHWEST QUARTER (S.W. 1/4), OF SECTION 30,
TOWNSHIP 44 SOUTH, RANGE 43 EAST, PALM BEACH COUNTY, FLORIDA

SHEET 2 OF 2

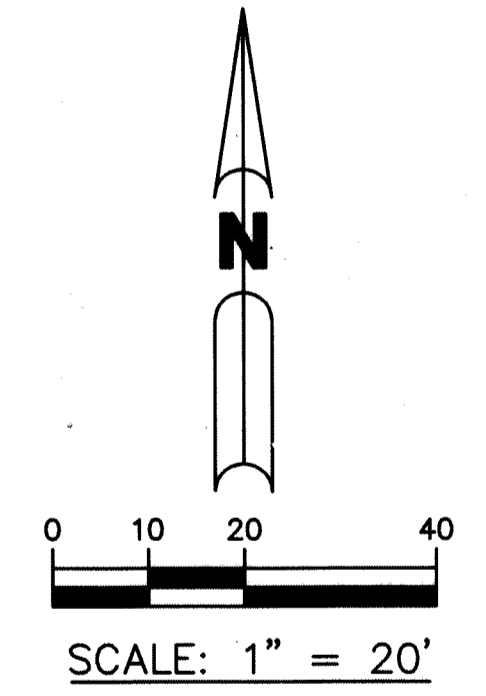
191



- ABBREVIATIONS:**
- ORB - OFFICIAL RECORD BOOK
 - P.B. - PLAT BOOK
 - NO. - NUMBER
 - PG. - PAGE
 - R/W - RIGHT-OF-WAY
 - SEC. - SECTION
 - PBC - PALM BEACH COUNTY
 - CL - CENTERLINE
 - NAD - NORTH AMERICAN DATUM
 - LB - LICENSED BUSINESS
 - 30/44/43 - SECTION 30, TOWNSHIP 44 SOUTH, RANGE 43 EAST
 - U.E. - UTILITY EASEMENT
 - D.E. - DRAINAGE EASEMENT
 - L.S.E. - LIFT STATION EASEMENT
 - L.L.C. - LIMITED LIABILITY COMPANY

- SYMBOLS:**
- PERMANENT REFERENCE MONUMENT (P.R.M.), SET 4"x4" CONCRETE MONUMENT WITH DISK STAMPED "LB6473"

- STATE PLANE COORDINATES:**
- A. COORDINATES SHOWN ARE GRID
 - B. DATUM - NAD 83, 1990 ADJUSTMENT
 - C. ZONE - FLORIDA EAST
 - D. LINEAR UNIT - US SURVEY FOOT
 - E. COORDINATE SYSTEM 1983 STATE PLANE
 - F. TRANSVERSE MERCATOR PROJECTION
 - G. ALL DISTANCES ARE GROUND UNLESS OTHERWISE NOTED
 - H. SCALE FACTOR - 1.0000401
 - I. GROUND DISTANCE x SCALE FACTOR = GRID DISTANCE
 - J. ROTATION EQUATION: NONE



PREPARING SURVEYOR & MAPPER'S STATEMENT
THIS INSTRUMENT WAS PREPARED BY
JOHN E. PHILLIPS III, P.S.M. 4826

BROWN & PHILLIPS, INC.
CERTIFICATE OF AUTHORIZATION # LB 6473
1860 OLD OKEECHOBEE RD., SUITE 509
WEST PALM BEACH, FLORIDA 33409
561-615-3988, 615-3986 FAX

D:\Projects\2021 Projects\1-088 Covenant Villas\1-088 Covenant Villas\1-088 Covenant Villas\1-088 Covenant Villas.dwg 11/4/2021 10:45:44 AM AutoCAD 2017 General/Document.dwg